

## Z™ -34/22 DC & Bi-Energy

### Specifications

| Models                        | Z-34/22 DC |            | Z-34/22 Bi-Energy |            |
|-------------------------------|------------|------------|-------------------|------------|
| Measurements                  | Metric     | US         | Metric            | US         |
| Working height maximum*       | 12.52 m    | 40 ft 6 in | 12.52 m           | 40 ft 6 in |
| Platform height maximum       | 10.52 m    | 34 ft 6 in | 10.52 m           | 34 ft 6 in |
| Horizontal reach maximum      | 6.78 m     | 22 ft 3 in | 6.78 m            | 22 ft 3 in |
| Up and over clearance maximum | 4.57 m     | 15 ft      | 4.57 m            | 15 ft      |
| ▲ Platform length             | 0.76 m     | 2 ft 6 in  | 0.76 m            | 2 ft 6 in  |
| ▲ Platform width              | 1.42 m     | 4 ft 8 in  | 1.42 m            | 4 ft 8 in  |
| ▲ Height - stowed             | 2.00 m     | 6 ft 7 in  | 2.00 m            | 6 ft 7 in  |
| ▲ Length - stowed             | 5.64 m     | 18 ft 6 in | 5.64 m            | 18 ft 6 in |
| ▲ Storage height              | 2.26 m     | 7 ft 5 in  | 2.26 m            | 7 ft 5 in  |
| ▲ Storage length              | 4.08 m     | 13 ft 5 in | 4.08 m            | 13 ft 5 in |
| ▲ Width                       | 1.73 m     | 5 ft 8 in  | 1.73 m            | 5 ft 8 in  |
| ▲ Wheelbase                   | 1.88 m     | 6 ft 2 in  | 1.88 m            | 6 ft 2 in  |
| ▲ Ground clearance - center   | 0.15 m     | 6 in       | 0.15 m            | 6 in       |

### Productivity

|                          |                     |             |                     |             |
|--------------------------|---------------------|-------------|---------------------|-------------|
| Lift capacity            | 227 kg              | 500 lbs     | 227 kg              | 500 lbs     |
| Platform rotation        | 180°                | 180°        | 180°                | 180°        |
| Vertical jib rotation    | 139°                | 139°        | 139°                | 139°        |
| Turntable rotation       | 355° non-continuous |             | 355° non-continuous |             |
| Turntable tailswing      | zero                | zero        | zero                | zero        |
| Drive speed - stowed     | 6.4 km/h            | 4.0 mph     | 6.4 km/h            | 4.0 mph     |
| Drive speed - raised**   | 1.1 km/h            | 0.68 mph    | 1.1 km/h            | 0.68 mph    |
| Gradeability - stowed*** | 30%                 | 30%         | 30%                 | 30%         |
| Turning radius - inside  | 1.75 m              | 5 ft 9 in   | 1.75 m              | 5 ft 9 in   |
| Turning radius - outside | 4 m                 | 13 ft 1 in  | 4 m                 | 13 ft 1 in  |
| Controls                 | 24V DC proportional |             | 24V DC proportional |             |
| Tyres - foam filled      | 23x37 cm            | 9 x 14.5 in | 23x37 cm            | 9 x 14.5 in |

### Power

|                         |   |        |   |        |
|-------------------------|---|--------|---|--------|
| Power Source            | 48V DC (eight 6 V batteries<br>315 Ah capacity) |        | 48V DC (eight 6 V batteries<br>315 Ah capacity) with Tier IV<br>Kubota 13.3 Hp (9.9 kw) diesel<br>driven alternator |        |
| Auxiliary Power Unit    | 24V DC  | 24V DC | 24V DC  | 24V DC |
| Hydraulic Tank Capacity | 15.1 L  | 4 gal  | 15.1 L  | 4 gal  |
| Fuel Tank Capacity      | —   | —      | 35.2 L  | 9 gal  |

### Sound & Vibration Levels

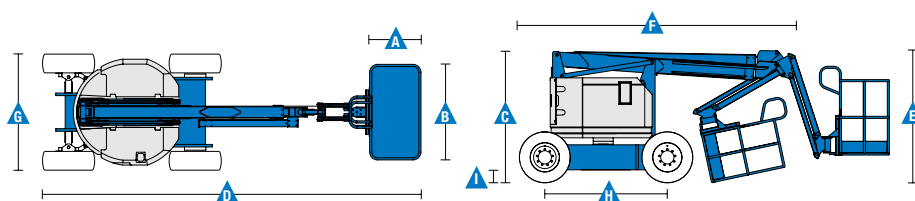
|                                 |                       |                           |                       |                           |
|---------------------------------|-----------------------|---------------------------|-----------------------|---------------------------|
| Sound pressure level (ground)   | <70 dBA               | <70 dBA                   | <70 dBA               | <70 dBA                   |
| Sound pressure level (platform) | <70 dBA               | <70 dBA                   | <70 dBA               | <70 dBA                   |
| Vibration                       | <2.5 m/s <sup>2</sup> | <8 ft 2 in/s <sup>2</sup> | <2.5 m/s <sup>2</sup> | <8 ft 2 in/s <sup>2</sup> |

### Weight\*\*\*\*

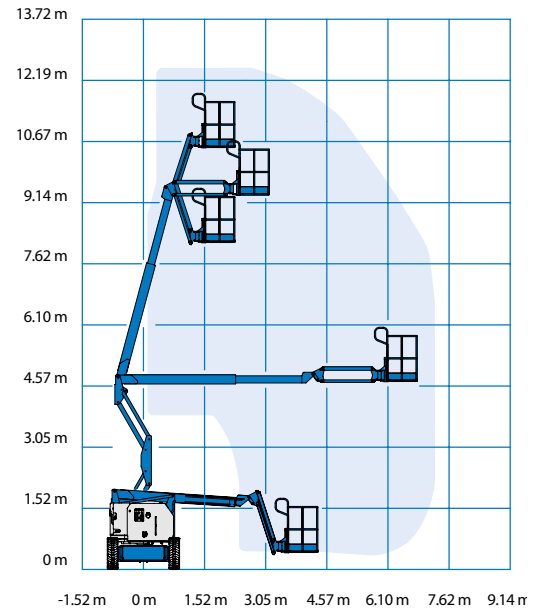
|  |          |            |          |            |
|--|----------|------------|----------|------------|
|  | 5,179 kg | 11,189 lbs | 5,632 kg | 12,189 lbs |
|--|----------|------------|----------|------------|

### Standards Compliance

EU Directives: 2006/42/EC - Machinery (harmonized standard EN280:2013); 2004/108/EC (EMC); 2006/95/EC (LVD); 2000/14/EC (Outdoor Noise)



### Range Of Motion Z-34/22 DC/Bi



\* The metric equivalent of working height adds 2 m to platform height. U.S. adds 6 ft to platform height.

\*\* In lift mode (platform raised), the machine is designed to operate on firm, level surfaces only.

\*\*\* Gradeability applies to driving on slopes. See operator's manual for details regarding slope ratings.

\*\*\*\* Weight will vary depending on options and/or country standards.

### Features

#### Standard Features

##### Measurements

- 12.52 m (40 ft 6 in) working height
- 6.78 m (22 ft 3 in) horizontal reach
- 4.57 m (15 ft) up and over clearance
- Up to 227 kg (500 lbs) lift capacity

##### Productivity

- 1.22 m (4 ft) jib boom with 139° working range
- Self-levelling platform
- Hydraulic platform rotation
- Proportional joystick controls
- Telematics-Ready Connector
- Thumb rocker steer
- Drive enable
- AC power to platform
- Horn
- Hour meter
- Tilt alarm
- Descent & travel alarms
- Flashing beacon
- 355° non-continuous turntable rotation
- Locking turntable covers (Bi-Energy only)
- Zero tailswing
- Certified load sensor

##### Power

- 48V deep cycle battery pack
- 24V DC auxiliary power
- On board alternator powered by Tier IV Kubota 9.9 kW (13.3 hp) engine (Bi-energy model only)
- Universal 30A battery smart charger
- Battery charge indicator
- Low battery voltage interrupt

#### Easily Configured To Meet Your Needs

##### Platform Options

- Steel 1.42 m (4 ft 8 in) (standard)
- Steel 1.17 m (3 ft 10 in)

##### Jib

- Articulating 1.22 m (4 ft) jib boom

##### Power

- 48V DC power source (eight 6V 315 Ah batteries)

##### Drive

- 2 x 4

##### Tyre Options

- Industrial foam-filled (standard)
- Industrial non-marking foam-filled (DC only)

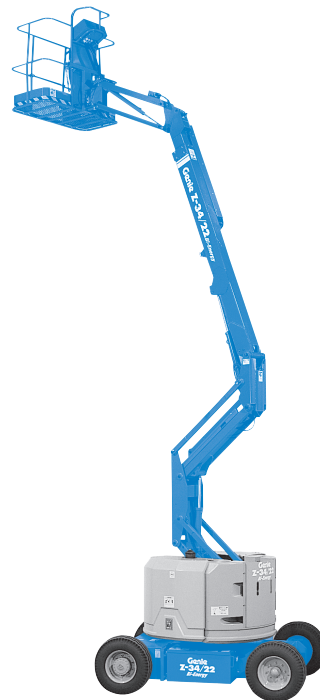
#### Options & Accessories

##### Productivity Options

- Platform top auxiliary rail
- Air line to platform
- Power to platform (incl. plug, socket and ground fault interrupt leakage on request)
- Work lights package (2 on chassis, 2 on platform)
- Aircraft protection kit <sup>(1,2)</sup>: platform foam padding and padded disable system (except RJ model)
- Biodegradable hydraulic oil <sup>(2)</sup>
- Hostile environment kit <sup>(2)</sup>: cylinder bellow, boom wiper seals and platform control box covers
- Tilt cut-out option
- Track & Trace <sup>(3)</sup> (GPS unit providing machine location & operating information)
- Lockable platform control box cover
- Tool tray
- Operator Protective Alarm
- Keypad unlocking device

##### Power Options

- AGM maintenance-free batteries <sup>(2)</sup>
- Low temperature cut-out module
- Engine heater option (Bi-energy only)
- Refinery kit with spark arrestor and electric or mechanical Chalwyn valve (Bi-Energy only)



<sup>(1)</sup> Reduces platform load capacity to 199,6 kg (440 lbs)

<sup>(2)</sup> Factory-fit option only

<sup>(3)</sup> Includes a first 2 years subscription



**CO.MA.CO S.r.l.**

via XIV Strada 21 - 20020 Cesate (MI) - Italy

Tel. +39 02 99065169

info@comacopro.com

[www.comacopro.com](http://www.comacopro.com)